



WELCOME - BACK TO SCHOOL NIGHT

CMIT Elementary Charter-South

Admin Team

SY 2019-2020

Chesapeake Lighthouse Foundation (CLF)

CMIT Elementary School
is a **PGCPS** public
charter.

Mr. Karaman

CLF operates the charter



SCHOOL PERSONNEL

Principal - TBA

Assistant Principal: Ms. L. Watkis

Program Coordinator- Mr. F Metin

Principal Secretary - Ms. J. Derin

School Counselor- Ms. D. Chandler

SPED Coordinator:- Ms. T. Worrell



Website: <http://cmitsouthes.org>

School Number (240) 767.4820

IMPORTANT INFORMATION

AM Enrichment 6:30-7:35

Teacher hours 7:25-2:55

Students arrival: 7:35

Breakfast 7:35-8:00

Instruction 7:35-2:15

Front office -7:55 am

Drive through closes 8:00

Tardy passes: 8:06

Dismissal begins: 2:15 p.m.

Dismissal ends at 2:45

PM Enrichment 3:00-6:00 PM



It is very important that I see the teacher

- 1. We try at all times not to disrupt the flow of teaching and learning.**
- 2. Decide if the information you are seeking is already written /posted**
- 3. If not, please use the preferred/agreed upon means of communication to reach out to the teacher to set up a time for conference**
- 4. If you cannot get in touch with the teacher, please email the front office secretary@cmitsouthes.org**

Arriving at school for a conference, office personnel will ask you for your ID to scan into the Raptor System and issue you an ID badge. Please cooperate.

STUDENT EXPECTATIONS

Tigers R.O.A.R. Pledge

Responsible scholars we are

Obeying all school rules

Achieving our goals

Respectful, Ready, Roar!



PGCPS Curriculum

<https://sites.google.com/pgcps.org/curriculum-instruction/home>

K-2 Reading Wonders; enVision; Pearson products

3-5 Pearson -Reading, math, science

Discovery Science K-5

STEAM infused lessons

Lego/Robotics

Makerspace



Creative Arts



Courses

Technology-Ms Ak

Music-Mr. Bailey

Lego-Ms Can

Makerspace- Mr. Cil

Art-Ms. James

PE- Mr. Loomer

***Students must wear sneakers
and PE uniform on gym days.**

BEST PRACTICES IN LITERACY INSTRUCTION



Did you know?

- Children who read on grade level by the end of 3rd grade are statistically more successful in school, work, and in life.
- Performance levels on national assessments show a widening achievement gap between students of diverse backgrounds.

The Annie E. Casey Foundation.. www.huffpost.com

www.researchgate.net

CLASS DOJO



- Class Dojo is a school wide tool used to communicate with families.
- We encourage all parents to sign up.
- Parent email (bulk delivery and also by teachers)
- Weekly Newsletter
- PTO website

Tentative – PROJECTS & TRIPS

FIELD
TRIPS



- Science Bowl Competition
- STEM Projects (Quarterly)
- STEM Fair (November) 1-5
- African American Museum (Tentative)
- Lego/Robotics
- Math Competitions
- Camp Schmidt (5th)
- Class trips coordinated by teachers to enhance mastery of standards across core subjects

CLF sponsored events

CultureFEST will take place on Saturday, November 2nd at the CMIT Laurel Campus from 12pm-5pm
CLFPR@CLFMD.ORG.



STEAM Educators
For Maryland's Future Innovators

CLF CULTUREFEST 2019

**Your Time
+
Your Ideas
+
Your Commitment
+
Your Family
Your Culture**

**Share your thoughts and unique skill sets
(strengths, abilities, passion, and drive)**

SWEEPSTAKES
The first 100 participants to complete a survey are entered for a chance to win a PRIZE!
<http://clfmd.org/culturefest-is-coming/>

SCAN ME



FOR SURVEY

The poster features several circular inset images: a group of people at a table, a person working on a craft project, a person playing a trumpet, a person working on a craft project, and a person working on a craft project. There is also a logo for the Maryland Department of Transportation and a cartoon tiger character.

HOMework - ELA/Reading

- Homework is posted each day. Students are responsible for homework.



- Students have been instructed to take home resources to complete H/W
- Homework is due the next day unless otherwise directed.
- District recommendations for homework is noted.

District Recommendations for Homework

Grade Level	Maximum Amount of Time Spent on Homework to include All Subject Areas
Kindergarten	10 minutes
First	20 minutes
Second	30 minutes
Third	40 minutes
Fourth	50 minutes
Fifth	60 minutes

This chart shows the **total** minutes suggested per grade level for all subject areas.

Interventions

- iReady has been purchased to support students borderline and below grade level
- Saturday Academy
- Special Education
- Student Intervention Team Student Support Team (SIT/SST)
- 504
- IEP's



Attendance

September is attendance awareness month

ESSA-Chronic absences is now on the school quality improvement index.

Parents and families are essential partners in promoting good attendance because they have the bottom-line responsibility for making sure their children get to school every day. Just as parents should focus on how their children are performing academically, they have a responsibility to set expectations for good attendance



As early as pre-kindergarten, students who are chronically absent are less likely to read proficiently by the end of third grade and more likely to be retained in later grades. (ESSA policy brief).

STOP! What can I do as a parent/guardian?

- Make getting students to school on time every day a top priority.
- Alert schools and community agencies to barriers that keep kids from attending class.
- Ask for and monitor data on chronic absence.
- Demand action to address systemic barriers that may be causing large numbers of students to miss too much school.

If a student is referred to SIT/SST due to attendance-follow through and attend meetings

Read and sign the attendance contract

Implement the course of action towards perfect attendance.

Grading and Reporting

The Grade Publishing Window is the period of time allotted to teachers to enter/submit grades for the progress/report card period. A notification will be sent out to all SchoolMAX users with relevant information regarding this window

Parents will be notified as we go through the school year.

Visit /sign up on the family portal

<https://family.sis.pgcps.org>

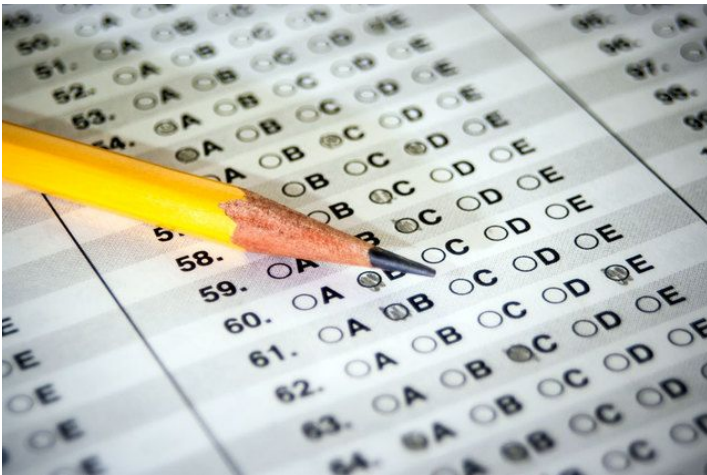
CONFERENCES & REPORT CARDS

Report Card Dates:
Will be published accordingly



Parent/Teacher Conference is November ?

State/District/School Assessment



- DRA;KRA;SLO
- MAPR; MAPM
- MISA;FAST
- Unit based assessments
- Teacher -created assessments
- MCAP

QUESTIONS/Comments

Please Email the Teachers

lwatkis@cmitsouthes.org

fmetin@cmitsouthes.org



Please mail teachers with questions

Read school communication for answers to questions.

Please post your questions on the parking lots available.

CMIT PTO

**Welcome
Back to
School!**

SY 2019-2020



Welcome to CMIT South PTO

CMIT South Elementary PTO Mission

To collaborate with the families in our membership to continuously improve the school experience and develop young citizens with strong STEM focus.

PTO Committees

Social Committee
PARCC Committee
Fundraising/
Donation Committee
Teacher Appreciation Week
Graduation Promotion Committee
Back to School Committee
Field Day Committee

PTO Board Members

Jachea Holmes, President
Deniece McDowell, Vice President
Christina Jackson, Treasurer
DeRon Johnson, Communications Officer
Georgette Shaw, Secretary
Amy Derfler, PTO Teacher Representative
Erika Herbert, PTO Teacher Representative

Contact us via email: PTO@cmitsouthes.org

Upcoming Events & Social Activities

[PTO General Meeting](#)

- Date: October 9, 2019
- Time: 6:00 – 7:00 pm
- Location: Cafeteria

[Mid-Atlantic Fundraiser Kick-Off](#)

- Date: September 31, 2019

[CMIT ES South Book Fair](#)

- Dates: October 21 – 25, 2019
- Location: Multimedia Center

Welcome to CMIT South PTO

Become a Member of "Thee" CMIT South ES PTO!!
Get FINANCIAL and let's "Build a Firm Foundation"

Cash is always great, we also take the below forms of payments.



PayPal: please take into consideration .88 charge for PayPal
-PTO@cmitsouthes.org

Make Checks payable to:

PTO CMIT South Elementary School (ES)

If you have any questions, please feel free to reach out to

PTO@CMITSOUTHES.ORG



CMIT SOUTH
ELEMENTARY
PTO

[https://cmitses.classroomparent.co](https://cmitses.classroomparent.com)
m



@PTOCMITS

ES
CMITSESP

TO
@PCMITS
ES

@CMITSOUTH

FS